

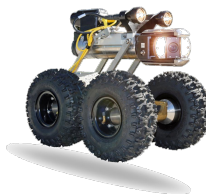
ESG at SPX

September 2023





HVAC



Detection & Measurement

Cooling	Heating	Location & Inspection	AtoN	CommTech/ Transportation
<ul style="list-style-type: none"> • <i>Highest efficiency products</i> • <i>Cooling towers save GHG vs alternatives</i> 	<ul style="list-style-type: none"> • <i>Full range of high-efficiency solutions</i> • <i>Leader in electrical heating</i> 	<ul style="list-style-type: none"> • <i>Reduce natural gas leakage</i> • <i>Reduce water loss</i> • <i>Reduce waste water seepage</i> 	<ul style="list-style-type: none"> • <i>Safer air travel and marine traffic</i> • <i>High efficiency lighting</i> • <i>Solar PV power sources</i> 	<ul style="list-style-type: none"> • <i>Equitable mobility</i> • <i>Safety and security</i>

Alignment with Multiple UN SDGs



Many of SPX's products and practices align with the United Nations' Sustainable Development Goals (SDGs)



High Efficiency Water Cooling Towers (lower energy usage)



Efficient and accessible public transportation



<https://sdgs.un.org/goals>



Safe underground infrastructure



Developing & training employees



Safe water and sewage lines (reduced leakage)



Enabling renewable power generation

ESG Commitments

Committed to GHG intensity reduction of 30% by 2030*

Enhanced D&I disclosures
(more demographic details at various levels of company)



190 of 500

Favorable ESG Story; Momentum on Journey Plan

*Reduction of scope 1 and scope 2 greenhouse gas emissions as a percent of revenue, using 2019 as the baseline.



Purpose

Enable a safer, more efficient, sustainable world



People

Promote a diverse, inclusive, empowered, and prosperous society



Planet

Protect the environment; thrive in a Paris Accord world





Energy Efficiency / Enabling Renewables

SPX's products help address the climate challenges posed by the ever-increasing demand for power. Our cooling towers are among the most efficient solutions for cooling, while our Aids-to-Navigation (AtoN) solutions enable safe deployment and management of renewables.



SPX MD Everest offers substantially greater cooling capacity than comparable towers, [reducing energy and lifecycle water usage](#) for data centers and other applications. 24%¹ of sales² applicable for LEED credit.



SPX's AtoN obstruction lighting solutions enable safe deployment of wind turbines and monitoring for outages. 8%¹ of sales² related to LED Lighting



Sustainable solutions that help reduce emissions

¹Based on management estimates

²Based on 2022 SPX Revenue



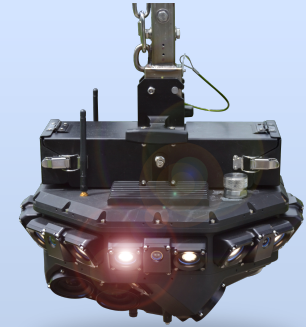
Keeping water infrastructure safe and clean

Safe and Clean Water & Waste Water Infrastructure

SPX's CUES business is a leading provider of inspection and remediation equipment for water and waste water infrastructure

CUES' world class product and software innovations help quickly identify trouble spots and prioritize maintenance and repairs.

CUES' equipment is used to inspect ~110,000 miles* (~177,000 km) of water and waste water pipes annually, resulting in substantially less leakage and contamination.



CUES' [SPIDER manhole scanner](#) provides a more accurate and significantly faster option for municipalities and contractors to inspect critical infrastructure.

* Management estimate



Waste Reduction & Recycling at SPX

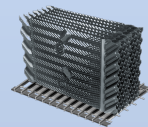
SPX's waste reduction and recycling programs support a transition to a circular economy, and align with our continuous improvement initiatives by reducing costs and improving efficiency.

SPX Cooling Technologies works with partners to recycle ~1600 tons per year of PVC and wood waste.

Our Radiodetection business is phasing out all printed customer materials in favor of digital versions.



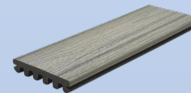
Efficient resource utilization through waste avoidance and recycling



Waste Cooling "Fill"



becomes



Quality building material



Catalogs, brochures, manuals



moving to



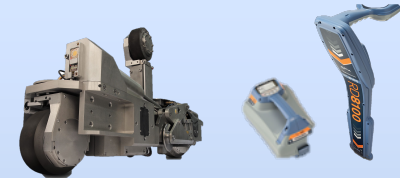
100% digital by 2023



SPX Innovates Solutions for Safety & Reliability

SPX offers a wide array of highly efficient and innovative products for the maintenance of safe, reliable infrastructure.

Our Location & Inspection equipment helps maintain safe and reliable underground infrastructure, while our Aids-to-Navigation (AtoN) solutions help alert air and marine traffic to potential hazards.



SPX L&I products help maintain critical underground utility infrastructure, and keep workers safe from [cable strikes](#)



Sustainable solutions that reduce carbon emissions



SPX's [solar-LED AtoN products](#) reduce power needs and facilitate installation and maintenance of remote assets



SPX's Schonstedt magnetometers are used to locate unexploded ordnance in former conflict zones



For more information click [here](#)



SPX's Public Transportation Solutions

SPX's Genfare business provides intelligent transportation fare management, and supports service for low-income communities.

Our fare collection solutions facilitate bus rider access with multiple payment options, while allowing transit authorities to more efficiently manage their routes and resources. This helps to reduce system cost and increase access.



Convenient, affordable access to public transportation supports sustainable growth



SPX's Genfare business provides a fully integrated, hardware and software-based solution for managing multi-media transit fare collection and customer service



Learn [more](#) about how Genfare advocates for sustainable access to public transport for low-income communities



Valuing differences is critical to our long-term success

Diversity & Inclusion at SPX

At SPX, we believe that valuing different backgrounds, experiences and opinions is the right thing to do and critical to our long-term success.

SPX's Diversity & Inclusion initiatives encompass a wide range of educational, engagement and continuous improvement focused activities, including executive leadership listening sessions, employee surveys, leadership learning courses, creation of networking and action groups, establishment of a three-year roadmap and target objectives, and the largest manager training exercise in the history of the company.

44% of our Board members are female. All recent additions to the board come from ethnically diverse backgrounds

Learn more about [SPX's Diversity & Inclusion](#) initiative



Building the People who Build the World

SPX believes that motivated employees thrive when recognized and rewarded, and see a clear path for development and advancement.



Our talent management frame-work, called RiSE, helps SPX develop and maintain a sustainable talented workforce. Please see our [Sustainability Report](#) for more detail



SPX offers on-demand skill-building, educational development courses, an executive leadership development program (pictured) and tuition reimbursement.



Investing in employees' growth is essential to long-term sustainable success



Our Board of Directors and management team set high standards regarding corporate governance, policies and procedures and transparent leadership.

Governance at SPX

From our boardroom to the plant floor we manage our business with a central focus on our core values of Integrity, Accountability, Teamwork, Excellence and Results. These values are the basis for our Corporate Governance Guidelines, and our Code of Ethics and Business Conduct.



Integrity

Do what's right, the right way. Both the "what" and the "how" matter.



Accountability

Take ownership. Create understanding and develop solutions by communicating with data and transparency.



Excellence

Exceed customer expectations through active engagement, relentless focus, and a passion for innovative solutions. Drive constant improvement in everything we do.



Team Work

Engage. Have fun. Make others successful. Our strongest asset is the power of "we".



Results

Make an impact. Focus on what matters. Deliver on commitments.

Where to Find Additional Information : ESG Reporting



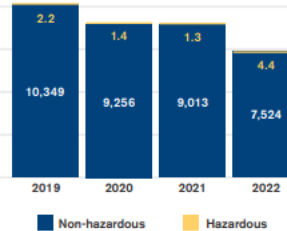
SPX
TECHNOLOGIES

2022 Sustainability
PROGRESS REPORT

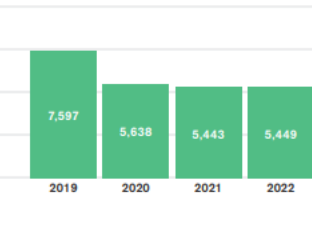
Annual Sustainability Reports

www.spx.com/our-company/esg-overview/

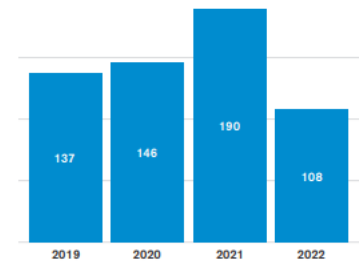
TOTAL WASTE DISPOSED (tons)⁶



TOTAL WASTE RECYCLED (hundred tons)⁶



TOTAL WATER USED (megaliters)^{6,7}



TOTAL BY SOURCE CATEGORY AND FUEL TYPE (mCO₂e)

